



# NEXUS



<https://mach.io/solutions/>

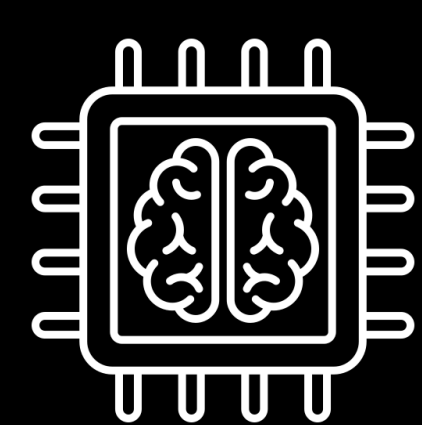
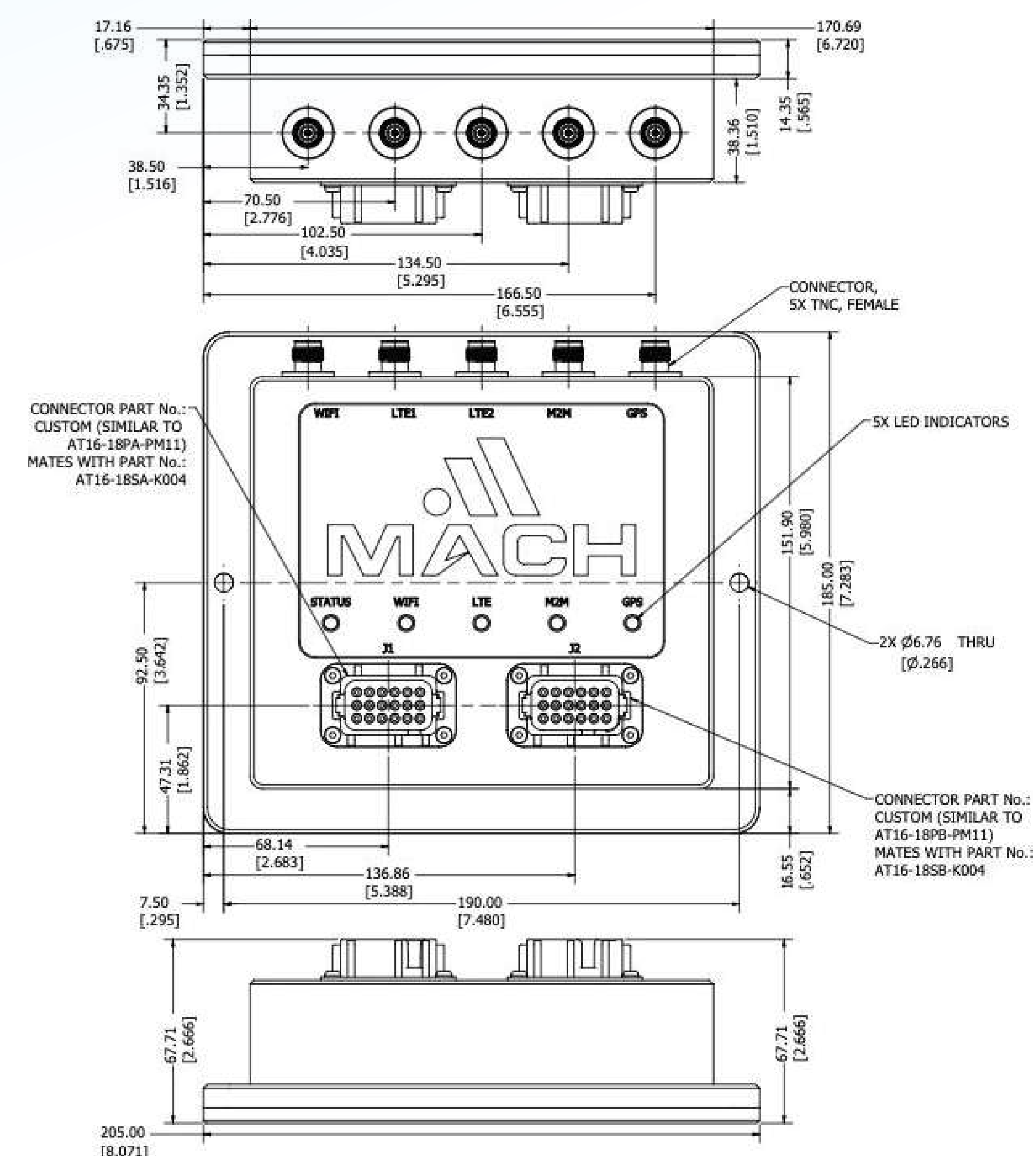
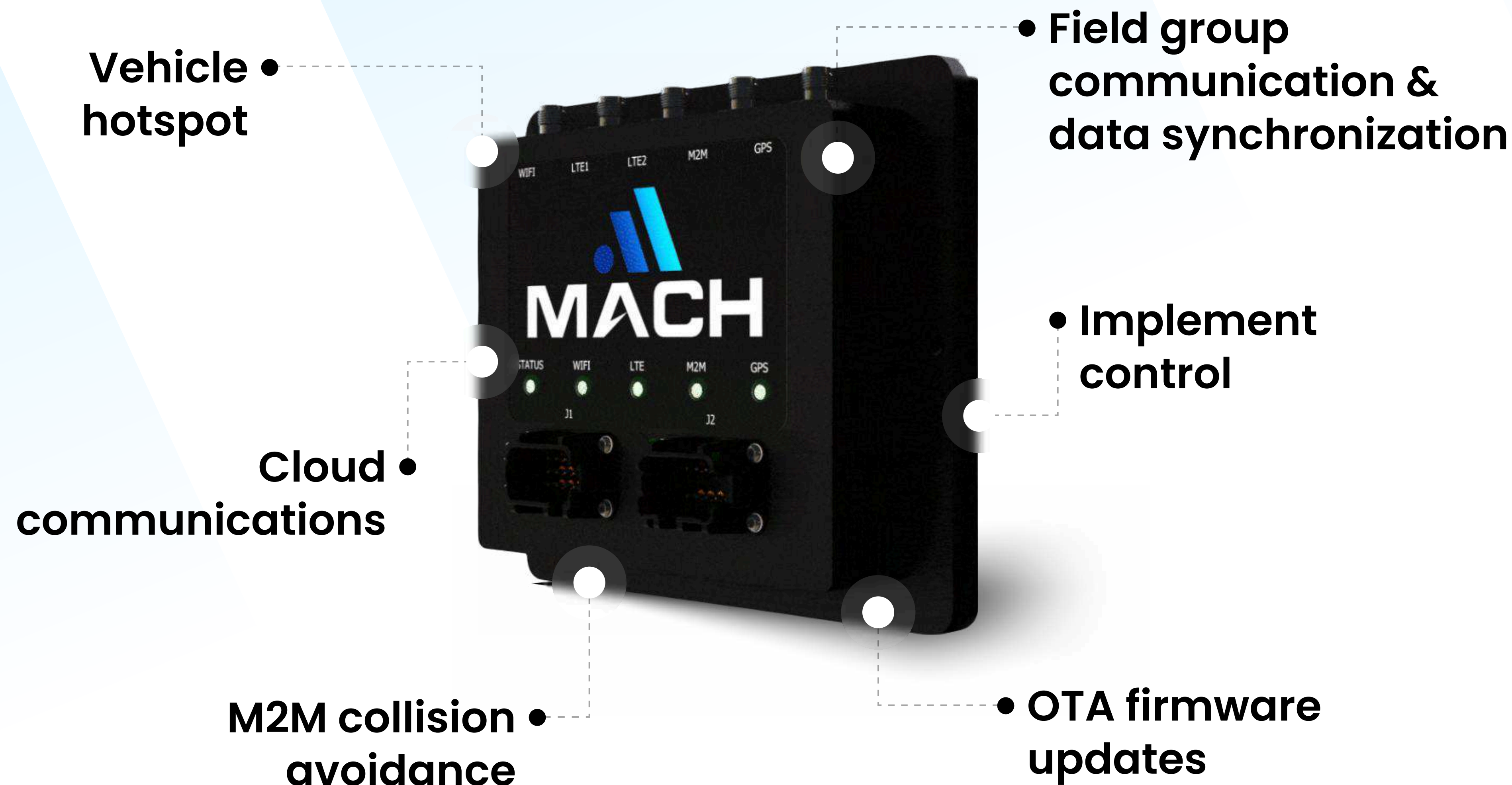
Mach Nexus is an enhanced telematics gateway integrating LTE, Wi-Fi, Mesh Radio, sub-GHz machine-to-machine connectivity, and efficient processing into a single rugged design. Developed for off-road agricultural, construction, & industrial machines, it provides onboard processing and secure connectivity for applications in a wide range of scenarios. Equipped with a cloud-based management platform, it offers over-the-air (OTA) updates and security, as well as in field online or offline machine to machine networking & monitoring for autonomous control, logistics, and asset tracking.

[www.mach.io](http://www.mach.io)

(301) 447-0120

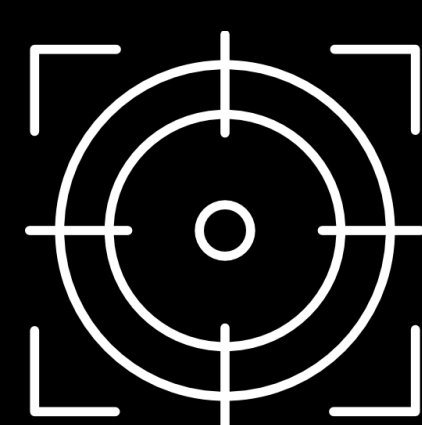
[info@mach.io](mailto:info@mach.io)

# APPLICATIONS



## DATA PROCESSING

Dual Core 650 MHz ARM Cortex A7



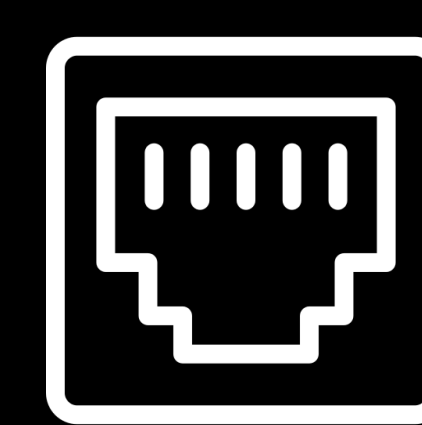
## RUGGED DESIGN

Designed to meet MIL-STD-810



## DATA STORAGE

512MB DDR3 RAM & 4GB eMMC Flash



## CONNECTIVITY

9-32VDC, 3A max. (6A if motor driver enabled)

## WIRELESS CONNECTIVITY

Three radios allow simultaneous communications over LTE, Sub GHz M2M Radio, 2.4GHz, or 5GHz

4G LTE Cat 1 with 3G fallback

Wi-Fi 5 (802.11ac)

Sub-GHz radio

GNSS receiver

Machine to machine (M2M) mesh capable

## RUGGED DESIGN

Enclosure sealed to IP67

Designed to meet MIL-STD-810

Operating temperature: -40°C to +70°C

Storage temperature: -40°C to +85°C

## DATA PROCESSING

Microprocessor: Dual Core 650 MHz ARM Cortex A7

Real Time MCU: 209 MHz Cortex M4

## DATA STORAGE

Memory: 512MB DDR3 RAM

Storage: 4GB eMMC Flash

## WIRED CONNECTIVITY/I/O

Input power: 9-32VDC, 3A max. (6A if motor driver enabled)

CAN (2x)

Separate uplink and downlink Ethernet connections (10/100Base-TX)

2Amp motor driver (1x)

Single pair, 100/1000Base-T1 Ethernet

Analog inputs (3x)