

MACH

# PILOT



<https://mach.io/solutions/>

The Mach Pilot delivers the ultimate mobile command and control interface, placing total remote control authority in your hands. Engineered for harsh environments, its rugged design and long-life, hot-swappable batteries ensure uninterrupted visibility and control. This handheld solution features a fully customizable layout to control multiple applications or machines. Multi-machine capability allows seamless toggling between assets and simultaneous E-Stop across the mesh network for unparalleled safety and site-wide control. A tablet-based graphical user interface provides flexibility to design specifically for your brand and machines.

[www.mach.io](http://www.mach.io)

(301) 447-0120

[info@mach.io](mailto:info@mach.io)

# APPLICATIONS

Vehicle and  
implement control

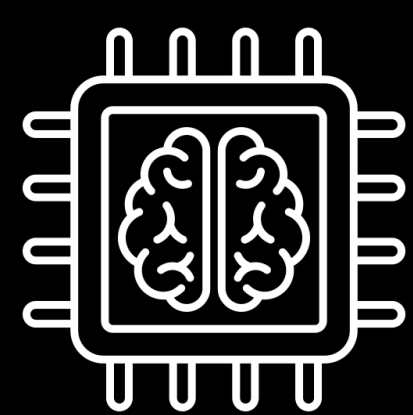


Emergency stop



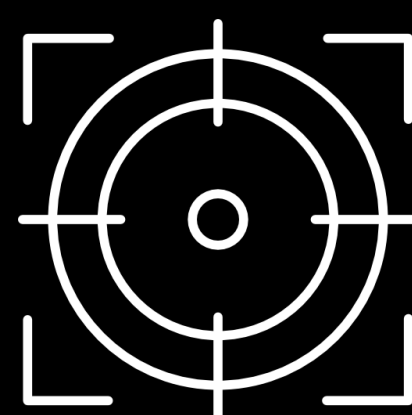
Manual  
override

Field testing  
& calibration



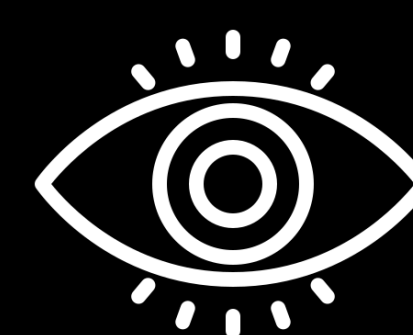
## CONFIGURABLE

Two-axis joysticks with  
USB-c charging



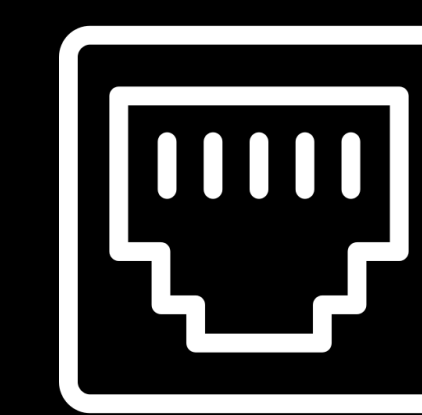
## RUGGED DESIGN

IP67 sealed enclosure



## REGGED DESIGN

Designed to meet MIL-  
STD-810 durability standards



## CONNECTIVITY

Mesh network wireless link  
to Nexus gateway

## KEY FEATURES

Works with Samsung Tab Active5

Embedded Linux OS

Sub GHz wireless link to vehicle Nexus

Multi machine control

Haptic vibration feedback

Drop tested with bumper guards

E-Stop switch for operator safety

Option for customizable button plates

## RUGGED DESIGN

Sealed to IP67

Designed to meet MIL-STD-810 durability  
standards

Drop-tested to survive field handling

Protective bumpers shield joysticks and switches

IMU for drop detection safety

## CONNECTIVITY & POWER

Wireless: Mesh network wireless link to Nexus  
gateway

Wired: USB-C for power/charging

Power: Dual hot-swappable Li-ion batteries

## CONFIGURABLE CONTROLS

Left and right two-axis joysticks

Left and right 5-button switches

Right-side scroll wheel

Left and right front single-axis joystick

